

506

THE QUINN

ARTIST COLLECTION

2 BEDROOM | 2 BATH

~1,006 SQ. FT.

LIVING

Floor-to-ceiling Windows

Wide-plank Oak Hardwood Flooring

Samsung Smart Stacked Washer and Dryer System

Nest Thermostats

Latch Keyless Entry System

KITCHEN

Stainless Steel Bertazzoni Appliance Suite with Electric Range, Convection Oven and Microwave

Stainless Steel GE Refrigerator

Bosch Integrated Panel Dishwasher

Quartz Countertops

High-gloss White Cabinetry

Moen Chrome Spring Kitchen Faucet

Built-in Wine Cooler

Herringbone-style Calacatta Marble Backsplashes

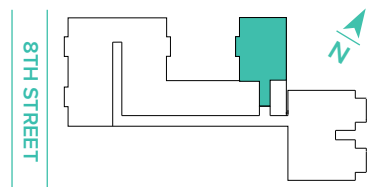
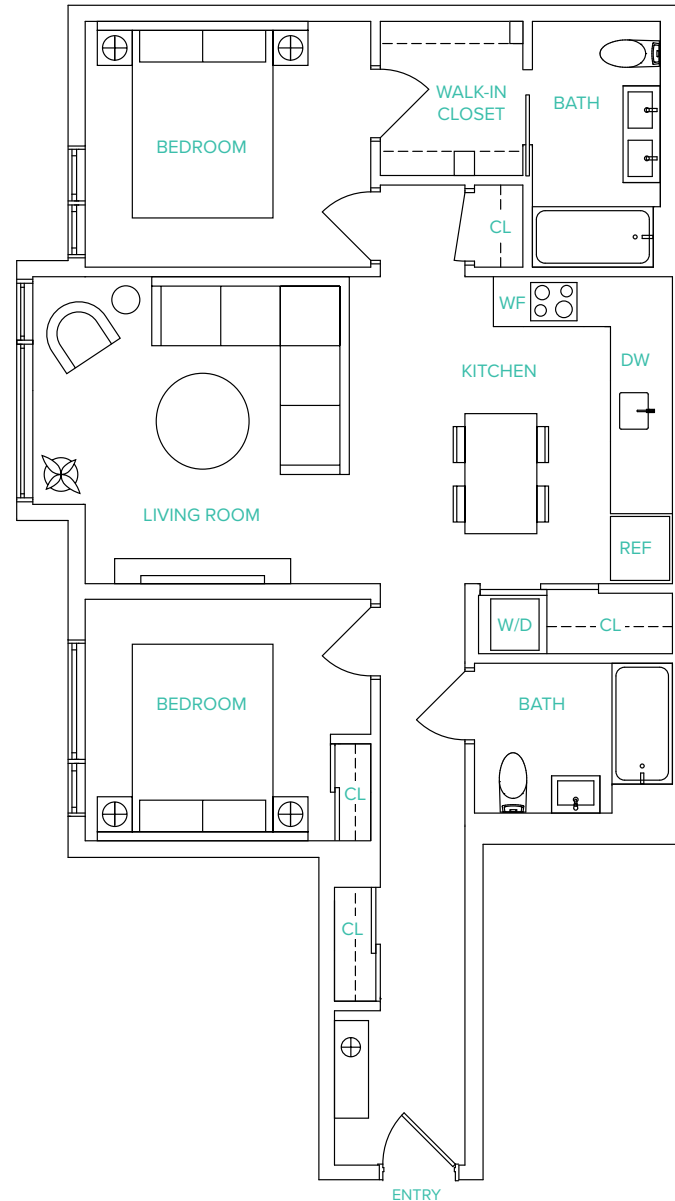
BATH

Kohler Lighted Mirror

Grohe Chrome Bathroom fixtures

High-gloss White Cabinetry

Herringbone-style Calacatta Marble Backsplashes



THEQUINNSF.COM | 345 EIGHTH STREET | SAN FRANCISCO CA 94103



©2020 The Quinn. These marketing materials are for informational purposes only. The Quinn reserves the right to change floor plans, elevations, specifications, materials, colors, features or sales prices without prior notice. Such changes may not always be reflected in our model homes. All renderings, floor plans and handouts are artist's conceptions and are not intended to be an actual depiction of the buildings, walks, driveways or landscaping. Prices, terms and features are subject to change without notice. Square footages are approximate. Models do not reflect racial preference. Real estate consulting, sales and marketing by Polaris Pacific — a licensed California, Arizona, Colorado, Hawaii, Oregon and Washington broker — CA DRE license #01499250. 🏠